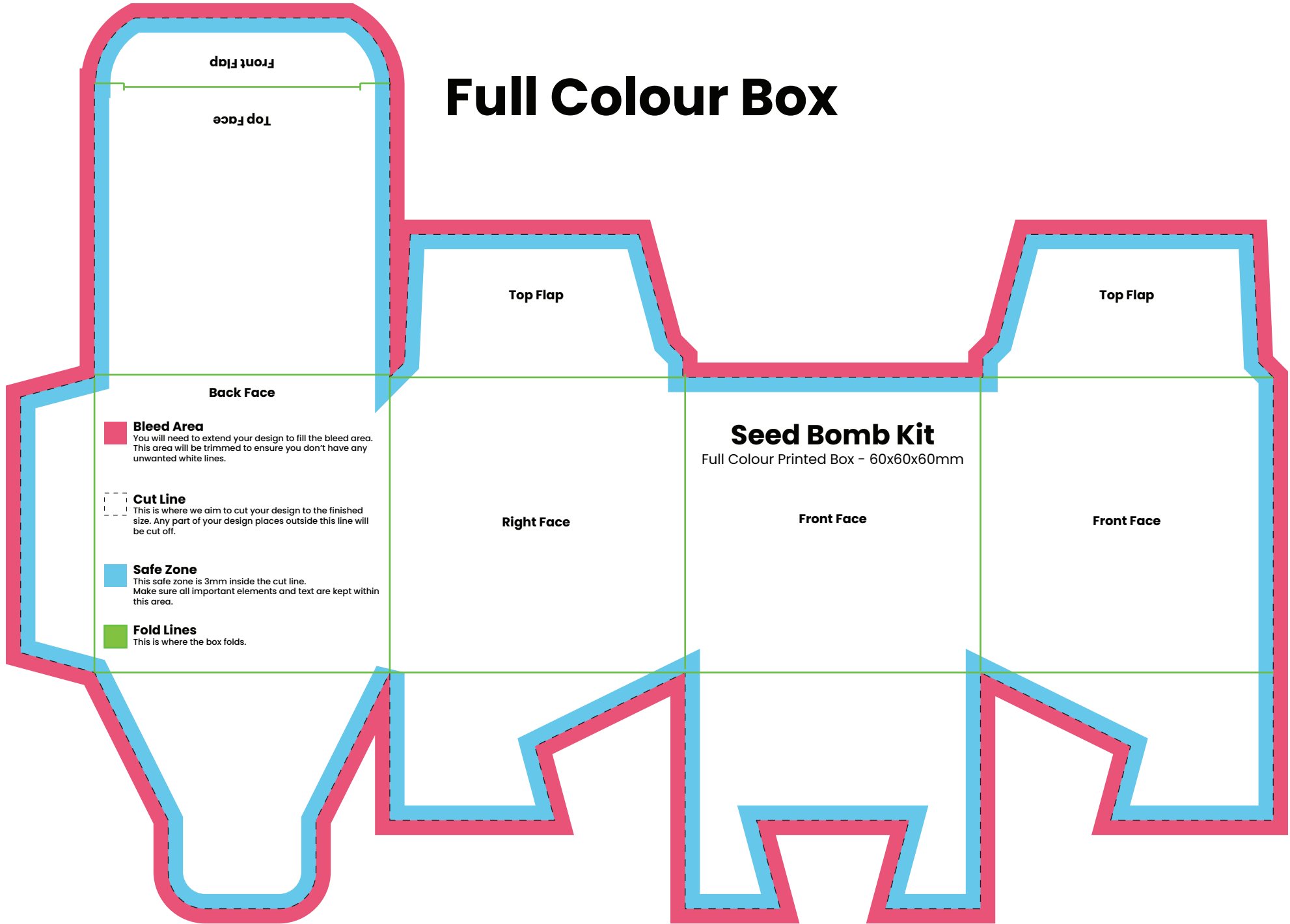


Full Colour Box



Front Flap

Top Face

Top Flap

Top Flap

Back Face

Bleed Area
You will need to extend your design to fill the bleed area. This area will be trimmed to ensure you don't have any unwanted white lines.

Cut Line
This is where we aim to cut your design to the finished size. Any part of your design places outside this line will be cut off.

Safe Zone
This safe zone is 3mm inside the cut line. Make sure all important elements and text are kept within this area.

Fold Lines
This is where the box folds.

Right Face

Seed Bomb Kit
Full Colour Printed Box - 60x60x60mm






Front Face

Front Face

Back Face

Top Face

Front Face

-  Safe area – keep all important elements within this zone.
-  Cut line – the final edge of your design.
-  Bleed – extend your artwork fully into this area.
-  Indicate where the design will be folded.
-  Red lines (1.5mm from black line): Avoid placing text here to ensure it's not affected by the fold.

Base Face

Glue Flap: Fully colour this area to avoid any white showing, as a small part may be visible after assembly.